

EA8PV CNC Sinker EDM

Advance

Introducing the new Mitsubishi M700 Series CNC Advance Control System with an ergonomically friendly 15" Color LCD Touch-Screen, keyboard and standard mouse.

Shown with optional LS 20 ATC



New 3-Sided Drop-Tank Design

Standard Features:

- Mitsubishi M700 Series Control uses Windows Embedded OS
- 1GB User Program Storage on a 40GB Hard Drive
- Fuzzy Pro 3 Plus Emulates an Experienced Operator Optimizing the Burn Process From Rough to Finish Orbit
- SS Jump 5 Optimizes Jump Up and Acceleration Control to Stabilize High-Speed NO-FLUSH Machining (592"/min. in Z and 197"/min. in X,Y)
- Power Master (GF2 Adaptive Control) Reduces Graphite Electrode Wear by as Much as 80%
- New Digital AC Smart Servo System Improves Resolution to 0.05µm (2 millionths) Speeding Response Time

Key Features of the EA8PV



XYZ Glass Linear Scale
0.1µm resolution, closed loop system with rotary encoders

New Rigid C-Axis option
High Inertia type for larger electrodes. Flushing through the C-axis.

Granite Table Standard
Improved Thermal Stability of the Mounting Surface.



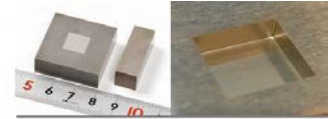
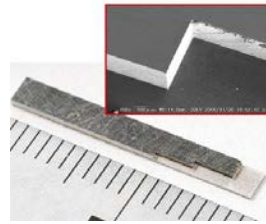
Thermal Displacement Compensation Technology

M700 Series Control with 15" Touch Screen, Keyboard and Mouse

New FP80V Generator with NP2 Fine Finishing Circuit

Compact Design (Small Footprint)

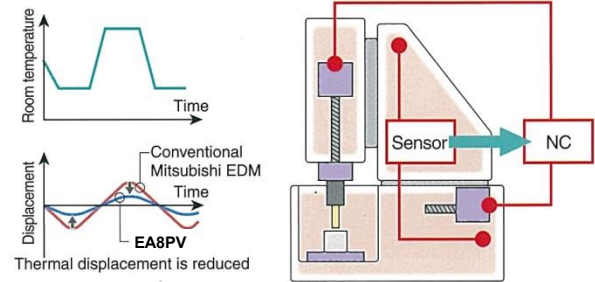
NP2 Circuit Precision & Surface Finish



- Minimum corner R 6µm using Cu electrodes
- Best finish 0.4µm Rz Cu to St

High-accuracy technology

- Thermal displacement compensation function, refined with the MA2000, is provided.
- As a standard, the XYZ axes are provided with an absolute value linear scale.

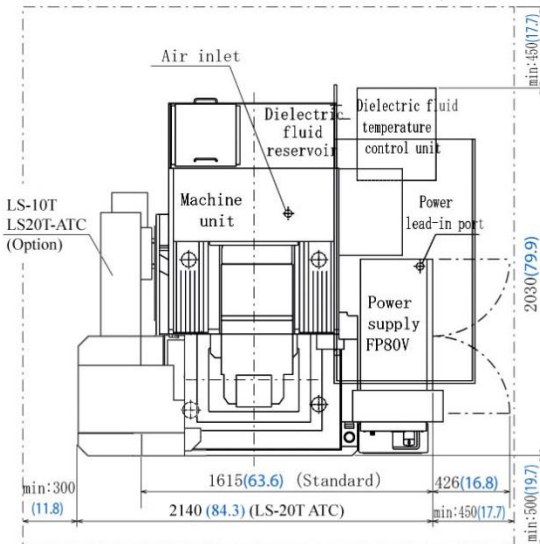
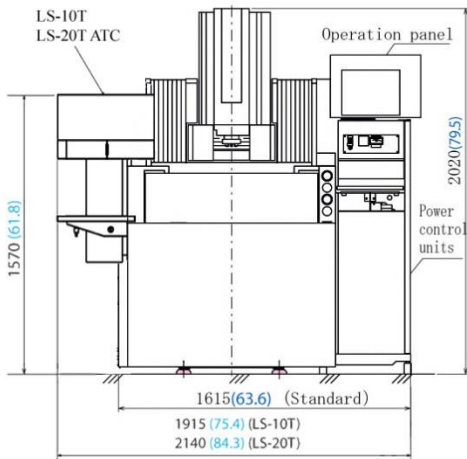


Power Supply Cost Performance:

- The new FP-V energy saving power supply reduces electrical consumption by 20% as compared to the previous FP model.
- High-Speed machining of tungsten carbide with copper tungsten electrode is now possible with the standard V-series Power Supply
- Electrode usage can be reduced by as much as 30% when machining tungsten carbide.

Machine Specifications (Drop-Tank Type)

	Machine Type	EA8PV Advance
Machine Unit	X-Y-Z axis stroke (inch)	11.8 x 9.8 x 9.8
	Work tank internal dimensions (W x D x H) (inch)	29.9 x 20.5 x 10.2
	Max. dielectric fluid level (inch)	8.3
	Table dimensions (W x D) (inch)	19.7 x 13.7
	Max. workpiece weight (lb.)	1200
	Max. electrode weight (lb.)	55
	Table to platen distance (inch)	8.8 – 18.6 (2.7" Granite table)
	Machine system dimensions (W x D x H) (inch)	63.6 x 79.9 x 79.5
	System total weight (lb.)	4400
Power Supply	Type	FP80V
	Machining current: Peak AMPs	80
Control Unit	Program support function	E.S.P.E.R. / G&M-Code
	Machining function	Fuzzy Pro III Plus
	Graphic display	15" TFT color LCD
	CPU / type	M700 series PC
Dielectric Fluid System	Reservoir capacity (gal)	46.2
	Filtering method	Paper cartridge (1pc)
	Temperature control type	Chiller
Machine Layout	Installation dimensions No ATC (W x D) (inch)	92.2 x 97.8
	Floor space requirement (sq. ft.)	62.6
C-axis	Max. electrode weight (lb.)	22
	Max. RPM (With Spindle option)	10 / 20 (1500)
	Min. indexing angle	.001°
	Min. drive unit	.001°



THE MITSUBISHI EXPERIENCE

MC MACHINERY SYSTEMS, INC.
a subsidiary of Mitsubishi Corporation

MC Machinery Systems Inc.
1500 Michael Drive
Wood Dale, IL 60191
Phone: (630) 616-5920
Fax: (630) 616-4068
www.mcmachinery.com