

# FA50V

## Worlds Largest Submerged Wire EDM



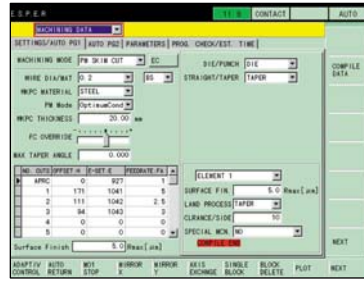
### Features:

- Standard 15.7" maximum workpiece height
- Standard 4 millionths XY Axes Linear Scales
- Standard .008~.012" Dia. Automatic Wire Threading
- Standard Extended "U-V" Stroke  $\pm 3$  inches
- Standard All-Axes Absolute Control System
- Standard 16-Step Programmable Flushing Control

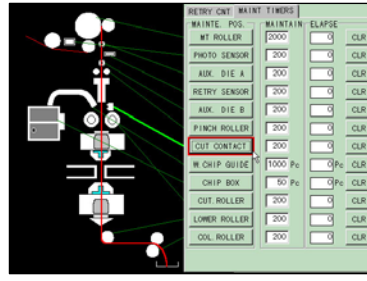
# Great On-Screen Graphics – Simplify Machine Operation



Set-up



E.S.P.E.R.



Auto AT Maintenance



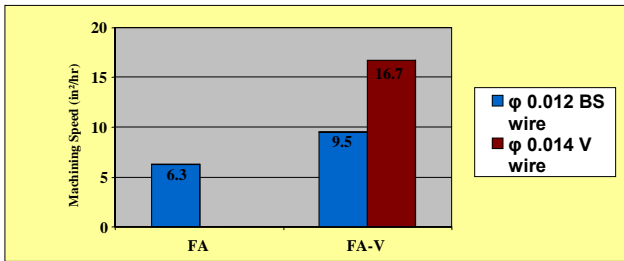
Machine Monitor

## Improved Machine Speed

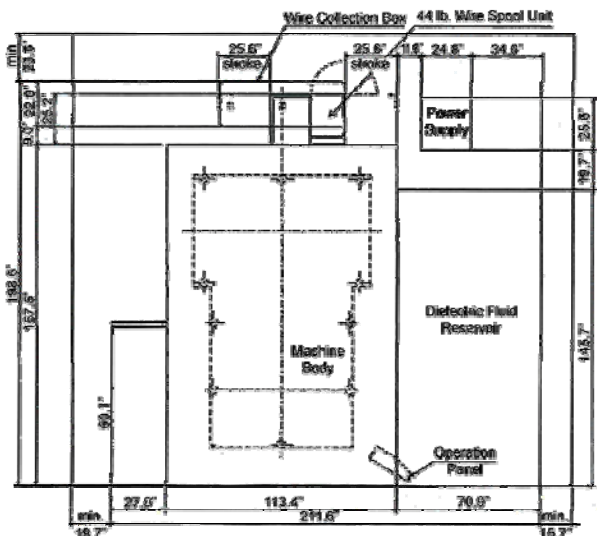
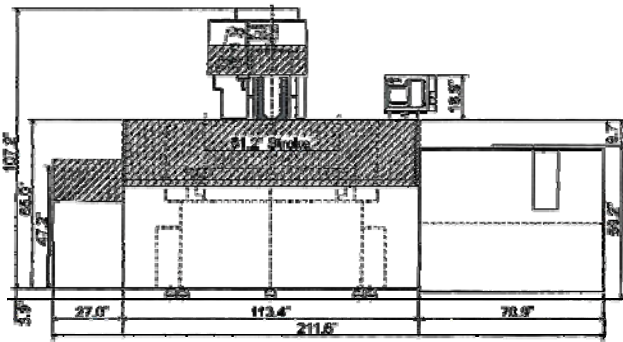
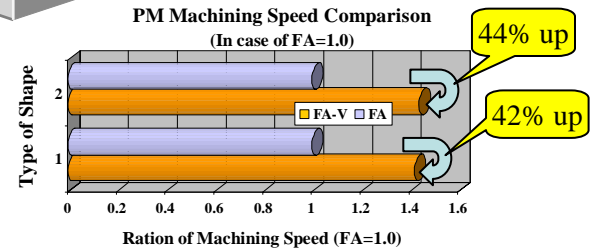
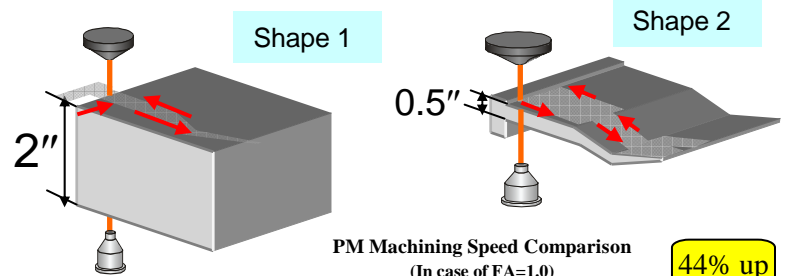
## PM4 Power Master Control

64-Bit Multi-Tasking Control now offers 100MB of user program storage and allows the operator to perform different tasks concurrently using a familiar, Windows-style graphical user interface on a 10.4" TFT liquid-crystal display.

PM4 Power Master Control can select all machining parameters including cutting feed rates and offsets. It will also optimize power settings to match workpiece conditions and thickness changes. A new addition to PM4 is complete technology support for both brass and high-speed coated wires with up to a 50% increase in machining speed.



- Machining speed in 11.8 in. thick workpiece machining (Steel)
- 6.3 in<sup>2</sup>/hr (FA: φ 0.012 BS)
- 9.5 in<sup>2</sup>/hr (FA-V: φ 0.012 BS)
- 1.5 times faster than FA
- 16.7 in<sup>2</sup>/hr (FA-V: φ 0.014 V-wire)
- 2.7 times faster than FA



Machine Unit		Machine Specifications	FA50V	
Machine Unit	Max Workpiece Dimensions (W x D x H)	in	78.7 x 63.0 x 15.6	
	Max Workpiece Weight	lb.	8,800	
	Table Dimensions	in	65.4 x 54.1	
	Machining Range (X x Y x Z)	in	51.2 x 39.4 x 15.7	
	Wire Dia. by AT Device	in	.008 ~ .012 (.014 No AT)	
	Wire Tension	g	200 ~ 2550	
	Automatic Wire Threader		Standard	
	Min. Start Hole Dia.	in	.020"	
	Taper Machining Unit		Standard	
	Taper Unit Travel (U x V)	in	±3.0 x ±3.0	
Fluid System	Max. Taper Angle	deg	15 @ 10.25" thickness	
	Overall Machine Dimensions (W x D x H)	in	149.6 x 192.7 x 107.2	
	Machine Weight	lb.	19,800	
	Tank Capacity	gal.	845	
	Filtered Particle Size	µm	3	
	Filter Elements		4 paper filters	
		Ion Exchange Resin	cu/ft	1.0
		Overall Dimensions (W x D)	in	70.9 x 145.7

THE MITSUBISHI EXPERIENCE



MC Machinery Systems Inc.  
1500 Michael Drive  
Wood Dale, IL 60191  
Phone: (630) 616-5920  
Fax: (630) 616-4068  
www.mitsubishi-world.com