

FA40V

High-Speed Machining Now Possible in a Large Capacity Machine



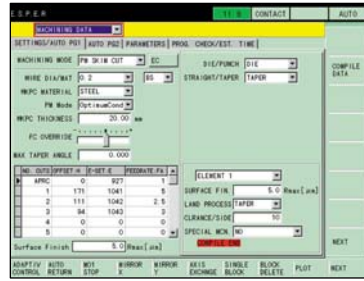
Features:

- Standard "V500" Power Supply
- Standard 15.7" maximum workpiece height
- Standard 4 millionths XY Axes Linear Scales
- Standard .008~.012" Dia. Automatic Wire Threading
- Standard Extended "U-V" Stroke ± 3 inches
- Standard All-Axes Absolute Control System
- Standard 16-Step Programmable Flushing Control

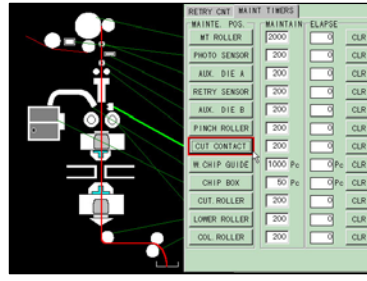
Great On-Screen Graphics – Simplify Machine Operation



Set-up



E.S.P.E.R.



Auto AT Maintenance



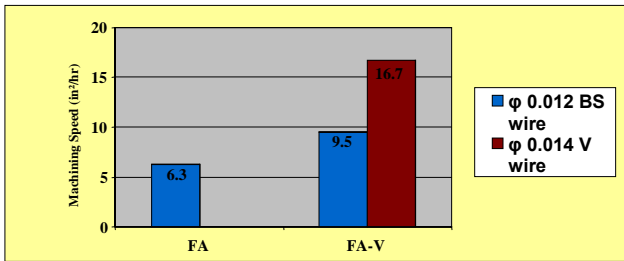
Machine Monitor

Improved Machine Speed

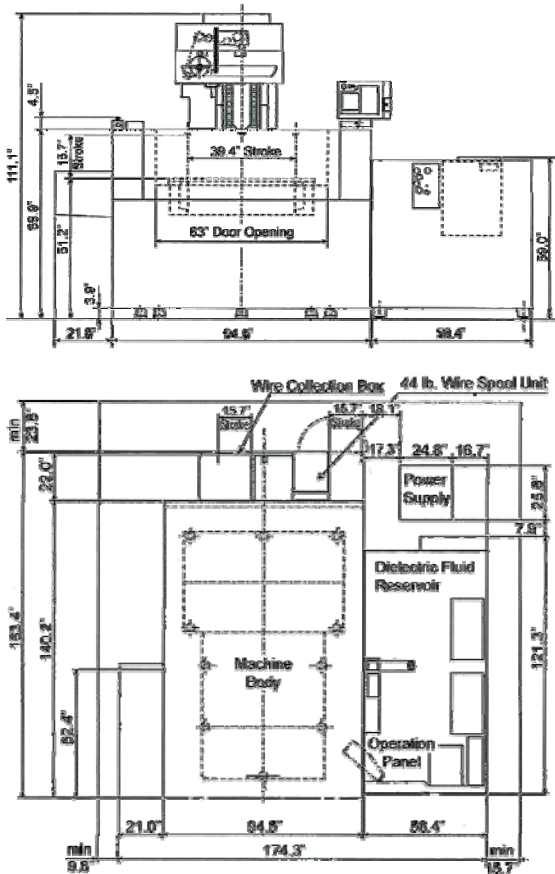
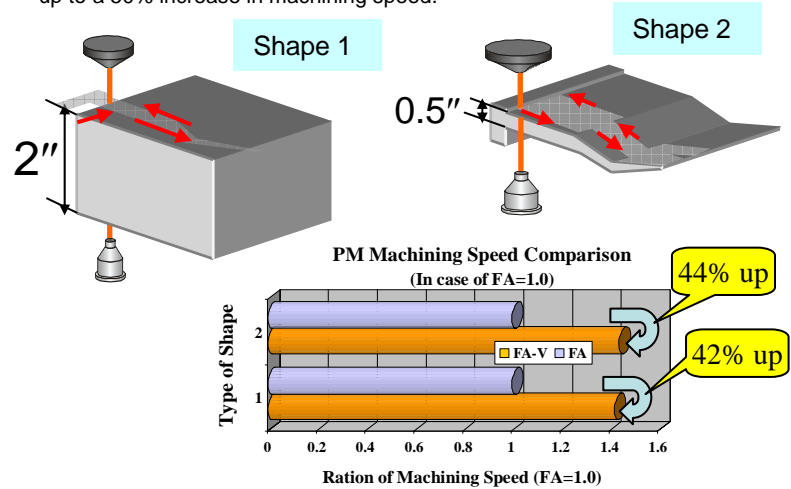
PM4 Power Master Control

64-Bit Multi-Tasking Control now offers 100MB of user program storage and allows the operator to perform different tasks concurrently using a familiar, Windows-style graphical user interface on a 10.4" TFT liquid-crystal display.

PM4 Power Master Control can select all machining parameters including cutting feed rates and offsets. It will also optimize power settings to match workpiece conditions and thickness changes. A new addition to PM4 is complete technology support for both brass and high-speed coated wires with up to a 50% increase in machining speed.



- Machining speed in 11.8 in. thick workpiece machining (Steel)
- 6.3 in²/hr (FA: φ 0.012 BS)
- 9.5 in²/hr (FA-V: φ 0.012 BS)
- 1.5 times faster than FA
- 16.7 in²/hr (FA-V: φ 0.014 V-wire)
- 2.7 times faster than FA



Machine Specifications		FA40V
Max Workpiece Dimensions (W x D x H)	in	61.0 x 51.2 x 15.6
Max Workpiece Weight	lb.	8,800
Table Dimensions	in	53.5 x 46.3
Machining Range (X x Y x Z)	in	39.4 x 31.5 x 15.7
Wire Dia. by AT Devise	in	.008 ~ .012 (.014 No AT)
Wire Tension	N	50 ~ 2500
Automatic Wire Threader		Standard
Min. Start Hole Dia.	in	.020"
Taper Machining Unit		Standard
Taper Unit Travel (U x V)	in	±3.0 x ±3.0
Max. Taper Angle	deg	15 @ 10.25" thickness
Overall Machine Dimensions (W x D x H)	in	122.6 x 163.4 x 107.2
Machine Weight	lb.	16,500
Tank Capacity	gal.	640
Filtered Particle Size	µm	3
Filter Elements		4 paper filters
Ion Exchange Resin	cu/ft	1.0
Overall Dimensions (W x D)	in	58.4 x 121.3



MC Machinery Systems Inc.
1500 Michael Drive
Wood Dale, IL 60191
Phone: (630) 616-5920
Fax: (630) 616-4068
www.mitsubishi-world.com