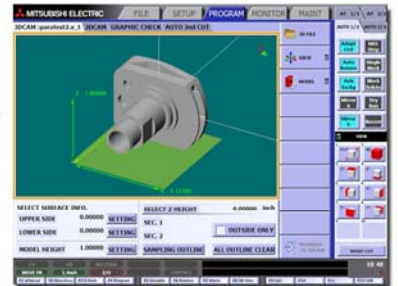


FA30V

— *Advance*

New 24" Tall Submerged Machining Capability Handles The Really BIG Jobs

Introducing the new Mitsubishi M750 Series CNC Advance Control System with an ergonomically friendly 15" Color LCD Touch-Screen, key-board and standard mouse.



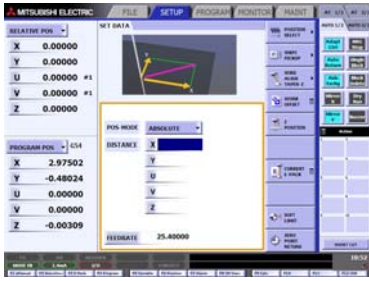
Features:

- Standard 26.5" maximum workpiece height
- Standard 4 millionths XY Axes Linear Scales
- Standard .008~.014" Dia. Automatic Wire Threading
- Standard Extended "U-V" Stroke \pm 4 inches
- Standard All-Axes Absolute Control System
- Standard 16-Step Programmable Flushing Control

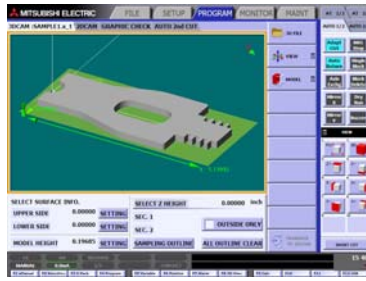
THE MITSUBISHI EXPERIENCE

 MITSUBISHI EDM

M750 Series Advance Control with 15" Touch Screen



Set-up



3D CAD Data Input



On-Board e-Manuals



Machine Monitor

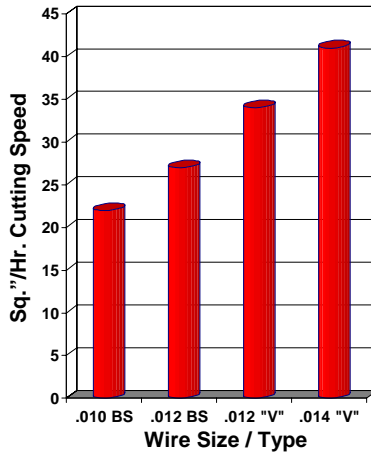
V500 Power Supply Ultra High-Speed

Improved Cutting Speeds in Difficult Materials

World's Fastest EDM for all wire diameters (D2 Steel)

- .010 BS = 22.0 sq"/hr
- .012 BS = 27.0 sq"/hr
- .012 "V" = 34.0 sq"/hr
- .014 "V" = 41.0 sq"/hr

The FA-VS and it's new automatic threading ability allows increased machining speed which greatly improves productivity in areas such as tall workpieces, poor flushing conditions, and piece-part machining.



FA-V reduces thermal cracking while machining average grades of graphite up to **30% faster**.

FA-V
with
.010
Brass Wire

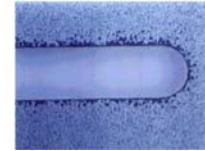


FA-S
with
.010
Brass Wire

Material: Poco 200 Graphite 1" Thickness

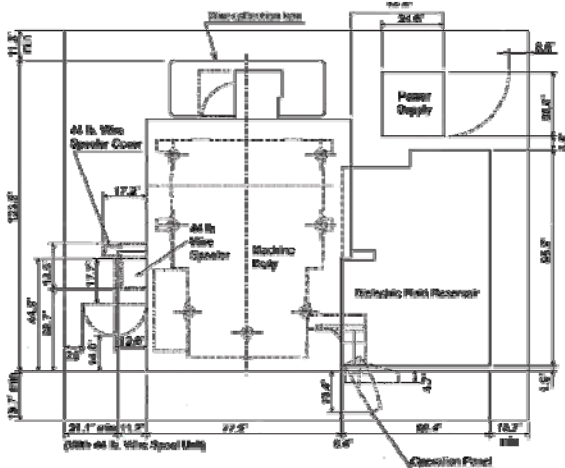
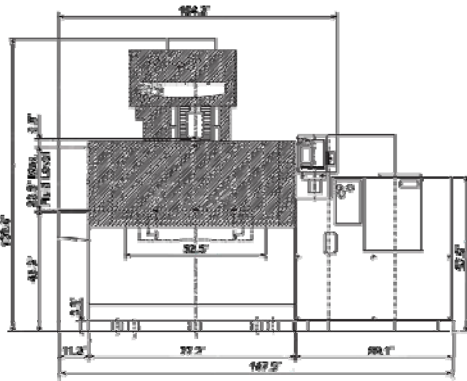
Cutting at maximum speed, the FA-V is up to **80% faster** than the current FA-S power supply.

FA-V
(BL Mode)



FA-S
(HL Mode)

Wire: .008" Brass Material: PCD .05" thickness



		Machine Specifications	FA30V-Adv
Machine Unit	Max Workpiece Dimensions (W x D x H)	in	51.1 x 39.30 x 23.8 submerged
	Max Workpiece Weight	lb.	6,600
	Table Dimensions	in	43.3 x 34.4
	Machining Range (X x Y x Z)	in	29.5 x 19.6 x 26.5
	Wire Dia. by AT Device	in	.008 ~ .014
	Wire Tension	g	200 ~ 2550
	Automatic Wire Threader		Standard
	Min. Start Hole Dia.	in	.020"
	Taper Machining Unit		Standard
	Taper Unit Travel (U x V)	in	±4.0 x ±4.0
	Max. Taper Angle	deg	15 @ 14.3" thickness
Fluid System	Overall Machine Dimensions (W x D x H)	in	104.2 x 140.0 x 109.6
	Machine Weight	lb.	12,600
	Tank Capacity	gal.	450
	Filtered Particle Size	µm	3
	Filter Elements		4 paper filters
	Ion Exchange Resin	cu/ft	1.0
Overall Dimensions (W x D)	in	58.4 x 85.8	



MC Machinery Systems Inc.
1500 Michael Drive
Wood Dale, IL 60191
Phone: (630) 616-5920
Fax: (630) 616-4068
www.mitsubishi-world.com

THE MITSUBISHI EXPERIENCE

