

ED-2000M

High-Speed Small-Hole EDM Drill

TOUCH SCREEN CONTROL:

Simple Operation

NO DI WATER REQUIRED:

Runs on plain tap water

UNIQUE NEW POWER SUPPLY:

Provides High-Speed With Low Wear

HIGH-SPEED:

1.0mm Hole 2 inch Thick D2

70 Second Average.

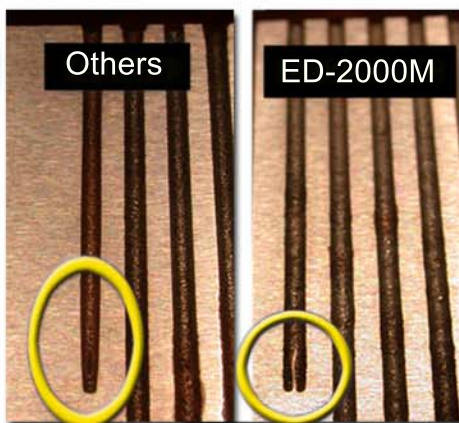
LOW WEAR:

14.8 Holes Through 2.0" Thickness

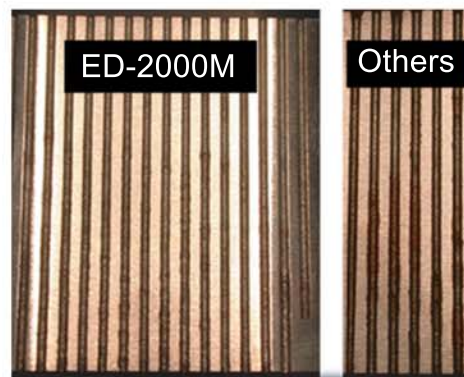
With One Electrode

CLEAN BREAK THROUGH:

No Bullet Nosing Of The Electrode



No Bullet Nosing



Holes Burned With One Electrode

1.0mm Electrode / 2 inch D2

THE MITSUBISHI EXPERIENCE



MITSUBISHI EDM

MC Machinery Systems, Inc.

ED-2000M Specifications

Main Features

- Newly developed low-energy consumption-type generator provides high-speed operation with extremely low wear.
- This unique power supply allows stable machining at the break through point reducing over all time while providing a good quality hole.
- Average time from break through to finished hole is mere seconds vs. other systems that take as much as 2 minutes or more to push the bullet nose through to finish size.
- This 2 inch D2 example shows a 2:1 ratio in burn speed. The ED-2000M made 12 holes vs. not quite 6 for the competition.
- A contact stop plate is located below the workpiece to detect when the electrode is completely through the part. No "guess work" determining if the electrode is far enough through to finish the hole.
- Extremely easy operation - New Touch-Screen Control.

HEAD STRUCTURE

Electrode Diameter Usage Range	(diameter)	0.3 - 3.0 mm
Z-axis minimum reading unit	(resolution)	0.001 in.
Z-column	(in)	7.874
Z-axis f	(in/min)	MAX 31.496
Z-axis screw type		Ball Screw (lead 4)
Z-axis servo travel	(in)	13.58

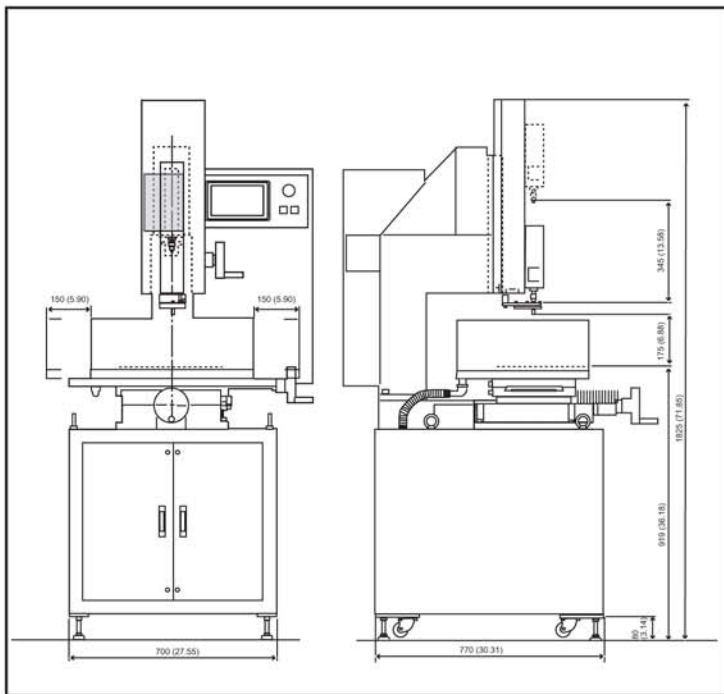
MACHINE TOOL

Working table dimension (WxD)	(in)	13.80 x 9.842
Minimum reading unit (X, Y axes)	(resolution)	0.0001 in.
Table travel (X axis)	(in)	11.811
Table travel (Y axis)	(in)	7.874
Work piece maximum weight	(lb)	330
Machine tool dimensions (WxDxH)	(in)	27.5 x 46.41 x 71.85
Machine Tool Weight	(Total)	880 lb
Environmental temperature safety range	(degree F)	40 -100

POWER SUPPLY COMPONENTS (Control parts included)

Maximum Input	(KVA)	2.5
Input Voltage	(V)	200 ~ 230V(60Hz)
Maximum Operating Electric Current	(A)	30 (peak)
Unload Voltage		Less Than 35V
Control Form		All Logic Form
Operation Type		Touch Panel
Remote Control		(Option)
Automatic System Interface		(Option)

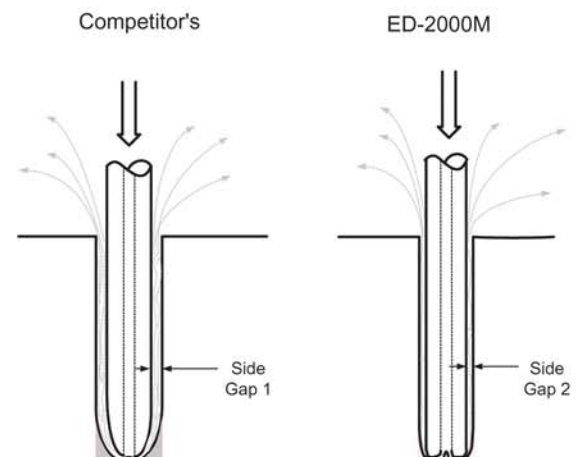
MACHINE LAYOUT



STANDARD ACCESSORIES

Instruction Manual		1
Standard Tool	Hexagon Socket Keys (mm)	1
Electrode Chuck	(diameter)	0.2 ~ 3.0mm
Plastic Container #1	For Processing Fluid (White)	1
Plastic Container #2	For Waste Fluid (Red)	1
Electrode Guide & Seals	(diameter)	1.0mm
Brass Electrode Tubing	(diameter)	1.0mm
High-Speed EDM Additive	EX-01	1 Liter

WEAR COMPARISON



 **MITSUBISHI EDM**
MC Machinery Systems, Inc.

1500 MICHAEL DRIVE, WOOD DALE, IL 60191
Ph. 630-616-5920 Fax: 630-616-4068
www.mitsubishi-world.com

New "Patented" power supply generates NO bullet nosing on the electrode, creating cleaner holes and quicker breakthroughs.