

EA8 Series Sinker EDM

Full Featured Compact CNC Sinker EDM



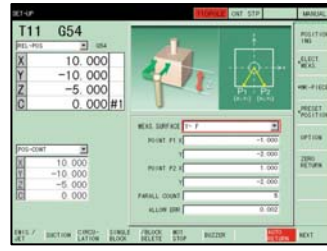
Features:

- 64-bit PC Based CNC Control With a 10.4" TFT LCD Screen
- 100MB User Program Storage on Hard Drive
- Fuzzy Pro 3 Emulates an Experienced Operator Optimizing The Burn Process From Rough to Finish Orbit
- High-Speed Jump Creates the Ability to do Most Burns With NO-FLUSH
- Saddle-less Column Movement System Uses a Special Combined Linear Motion Way System
- New Digital AC Smart Servo System Improves Resolution to 0.05µm (2 millionths) Speeding Response Time

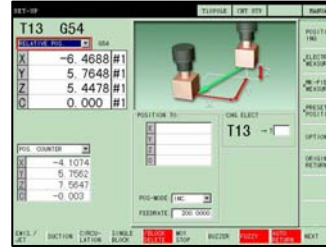
Great On-Screen Graphics – Simplify Machine Operation



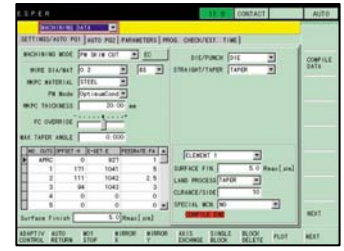
Select Job Type



Set Start Point



Electrode Pickup



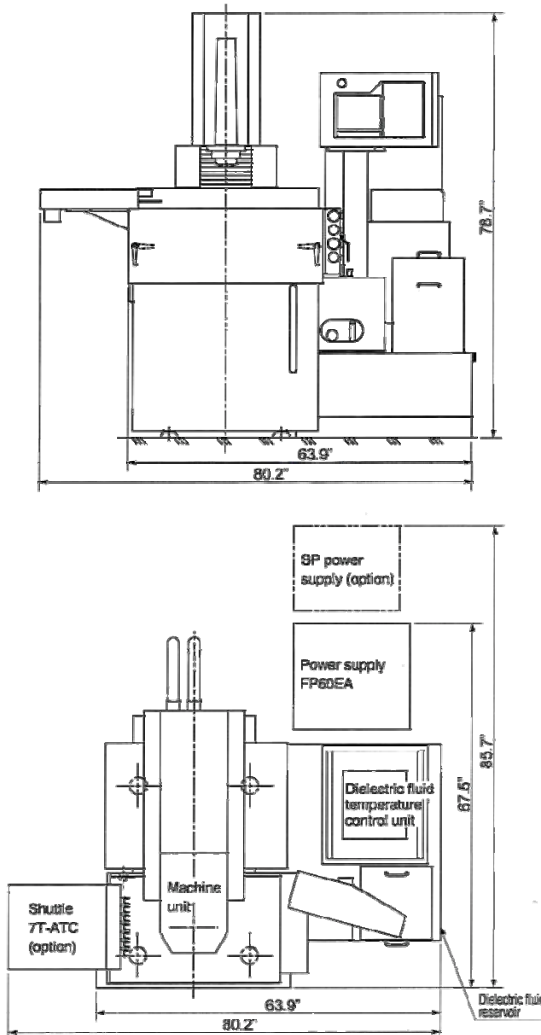
ESPER Program

New FP60 (Fine Pulse) Power Supply Provides 80 Peak AMPS and will:

- Reduce finishing time, especially in large electrode applications
- Reduce electrode wear
- Improve machining stability
- Improve surface finish
- Improve overall speed dramatically
- Provide conditions for 5200 individual machining settings (E-Packs)
- Provide conditions for 200 complete machining programs (Master Packs)

Machine Specifications

	Machine Type	EA8
Machine Unit	X-axis stroke (inch)	11.81
	Y-axis stroke (inch)	9.84
	Z-axis stroke (inch)	9.84
	Work tank internal dimensions (W x D x H) (inch)	30.31 x 19.69 x 9.84
	Max. dielectric fluid level (inch)	7.87
	Table dimensions (W x D) (inch)	19.69 x 13.78
	Max. workpiece weight (lb.)	1214
	Max. electrode weight (lb.)	55
	Table to platen distance (inch)	7.87 – 17.72
	Machine unit dimensions (W x D x H) (inch)	37.80 x 57.09 x 78.35
Machine unit weigh (lb.)	2649	
Power Supply	Type	FP60
	Machining current: Average / Peak	60 / 80
Control Unit	Program support function	E.S.P.E.R. / G&M-Code
	Machining function	Fuzzy Pro III Plus
	Graphic display	10.4" TFT color LCD
	CPU / type	64-bit / PC
Dielectric Fluid System	Reservoir capacity (gal)	50
	Filtering method	Paper cartridge (1pc)
	Temperature control type	Fan cooler
Machine Layout	Installation dimensions (W x D) (inch)	63.39 x 66.02
	Floor space requirement (sq. ft.)	29.1
C-axis	Max. electrode weight (lb.)	11
	Max. RPM	10 / 20
	Min. indexing angle	.001°
	Min. drive unit	.001°



 **MITSUBISHI EDM**
MC Machinery Systems, Inc.

1500 Michael Drive
Wood Dale, IL 60191
Phone: (630) 616-5920
Fax: (630) 616-4068
www.mitsubishi-world.com